

1:10

60
50
40
30
20
10

40

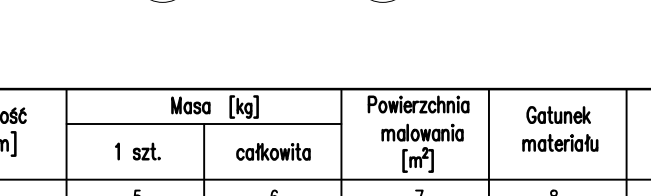
10

12

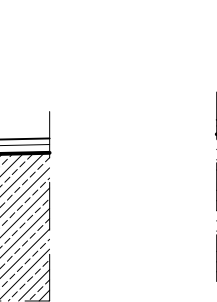
CM. BALUSTRADO

[illegible]

A | 1:20



1:20



10x150=1500

2

4

1500

Technical drawing of a four-legged table. The drawing includes a top view showing the rectangular table top and four legs, and a cross-section view labeled '5' showing the internal structure and joinery of the legs and top. The cross-section view shows the legs joined to the top with mortise and tenon joints, secured with pins. The table top is shown with a slight curve and a central support structure.

- BALUSTRADA ALUMINIOWA**
ŁĄCZNA DŁUGOŚĆ: 99,6m + 91,2m= 190,8 m
