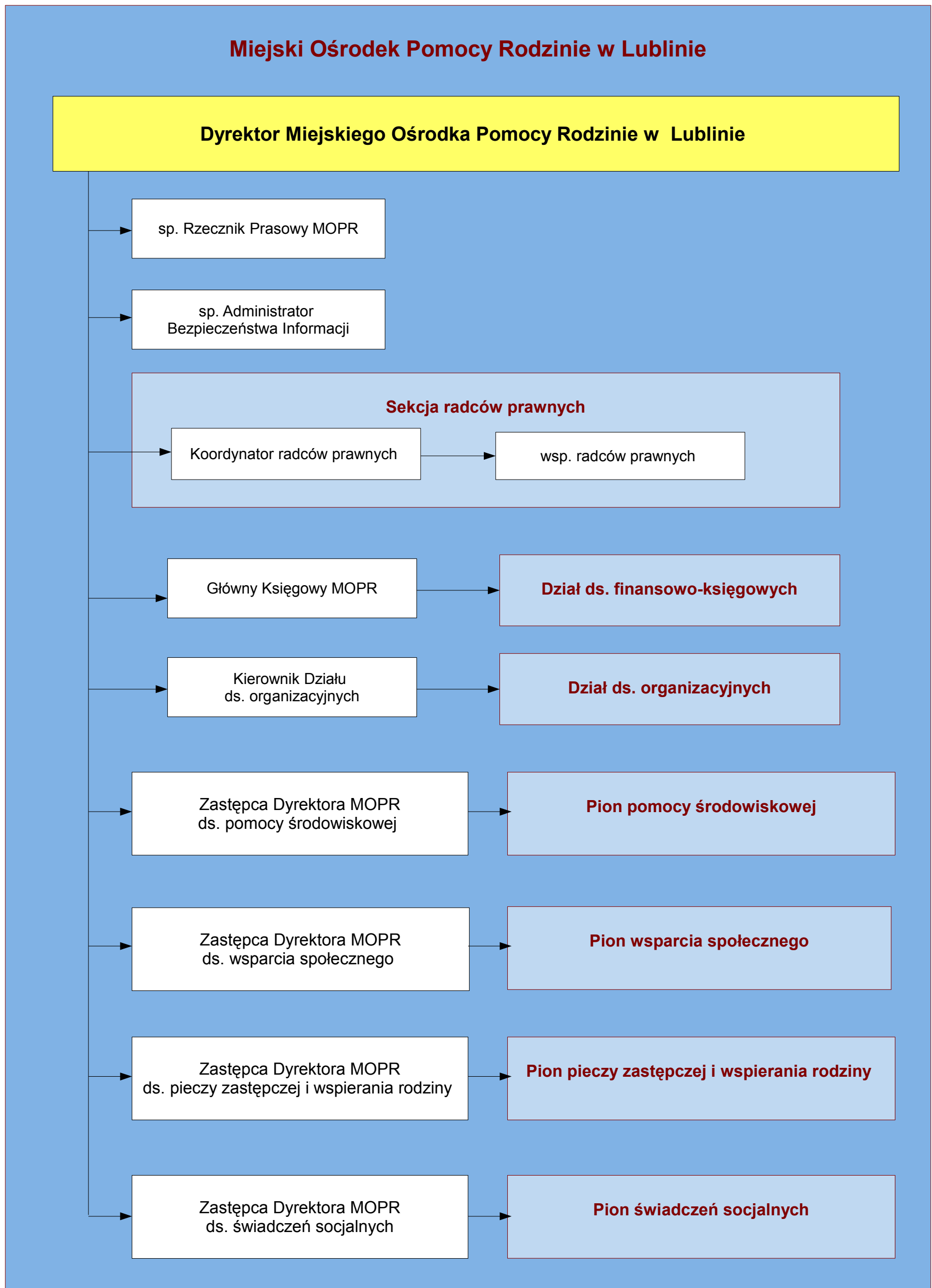
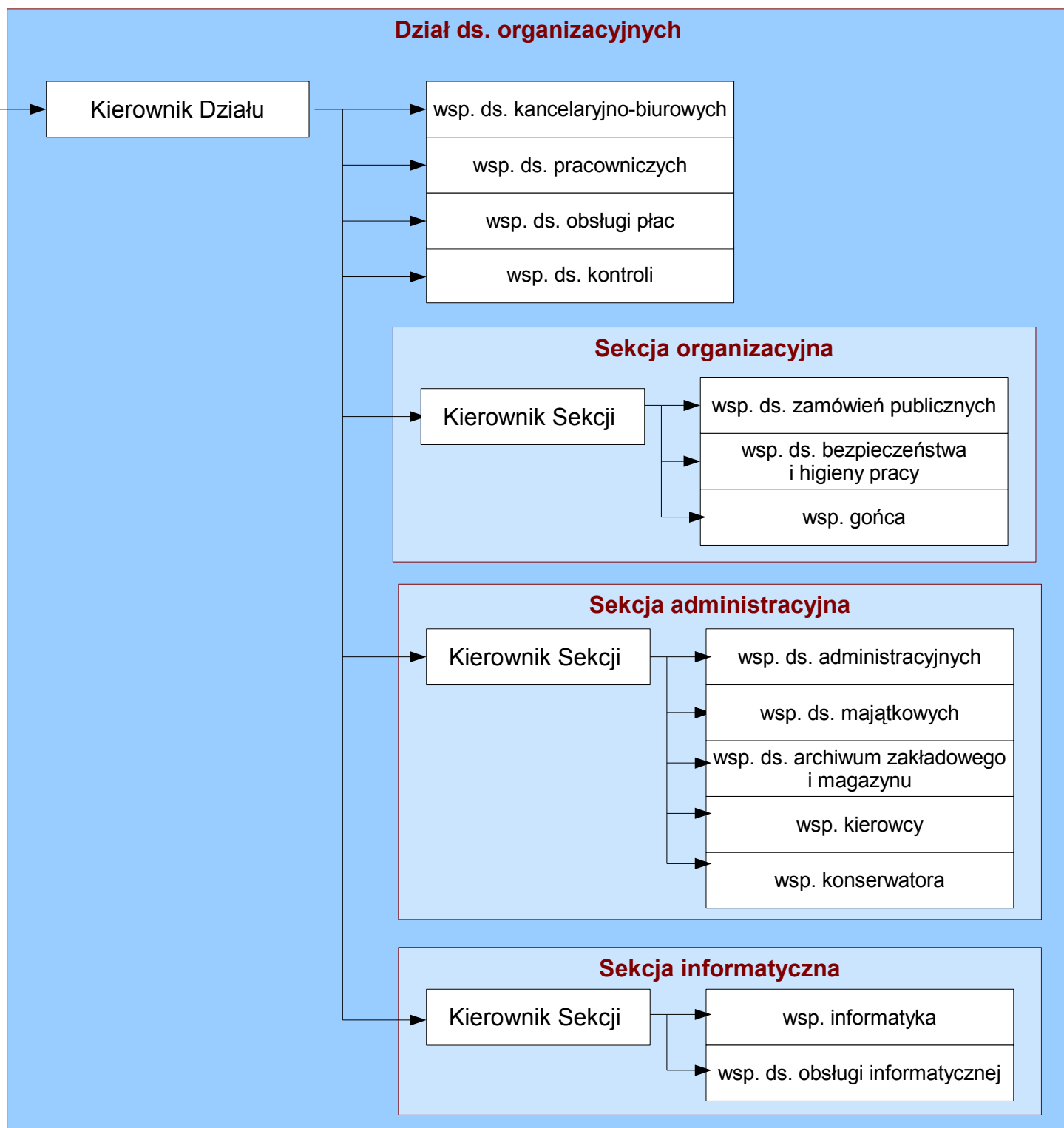
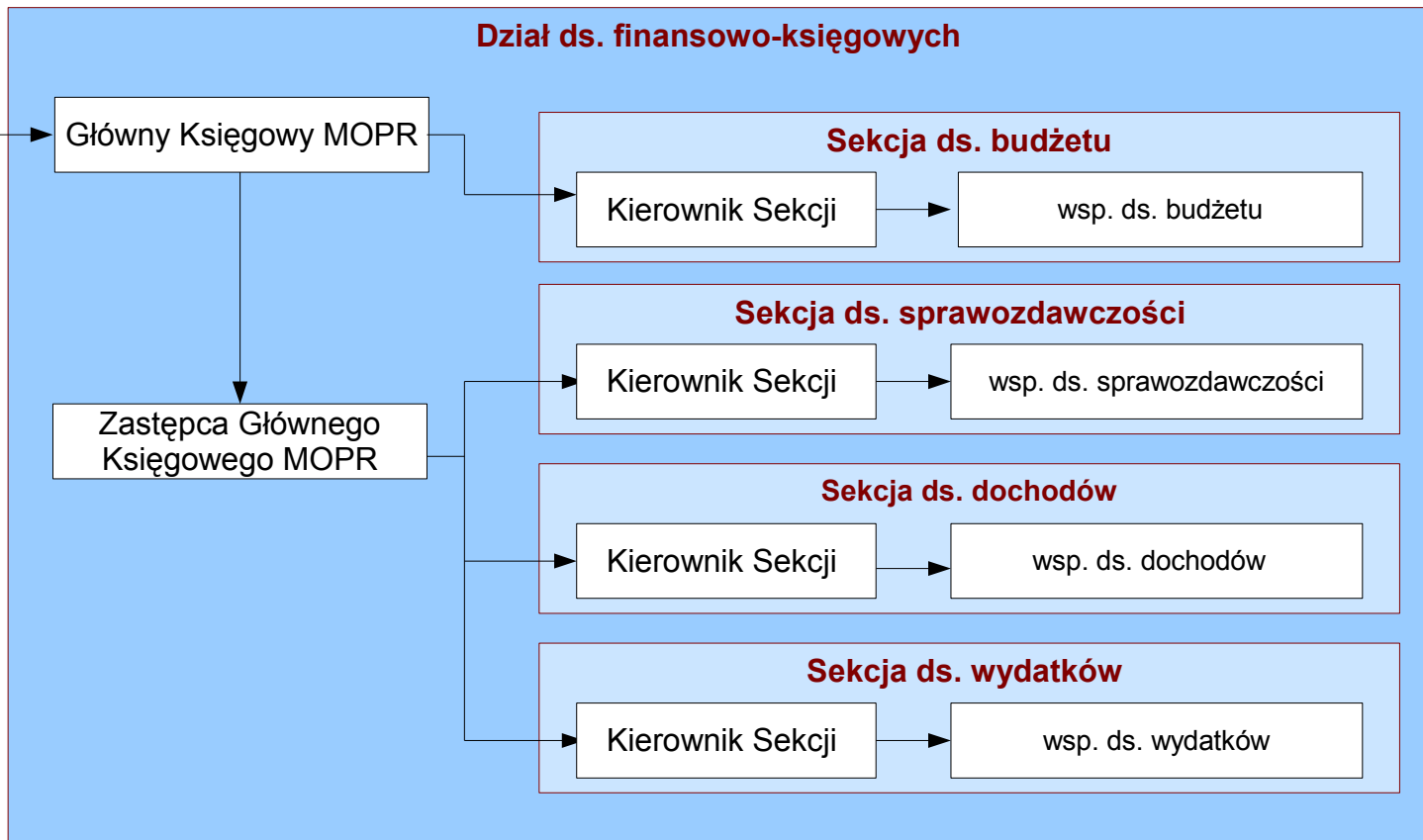
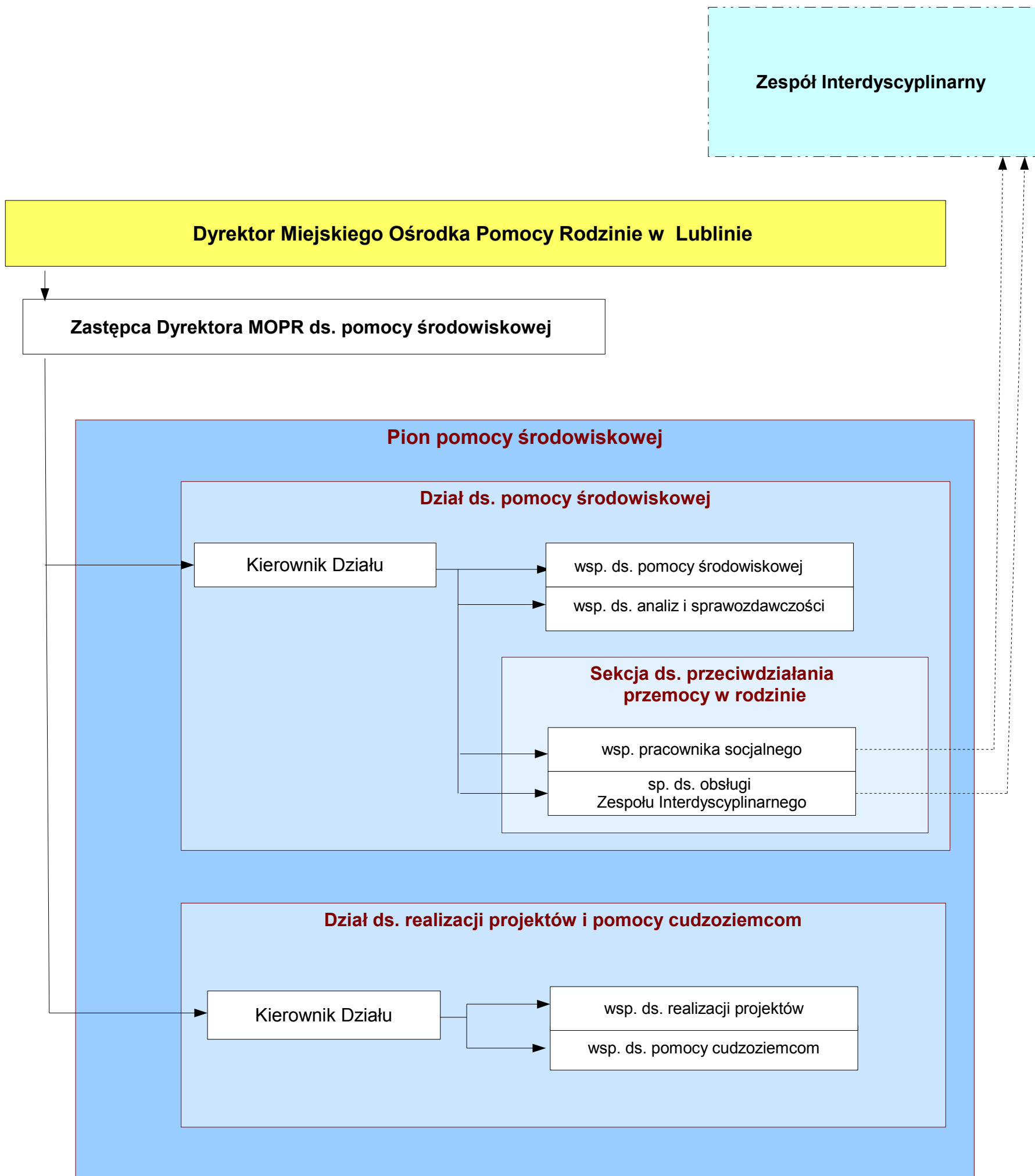


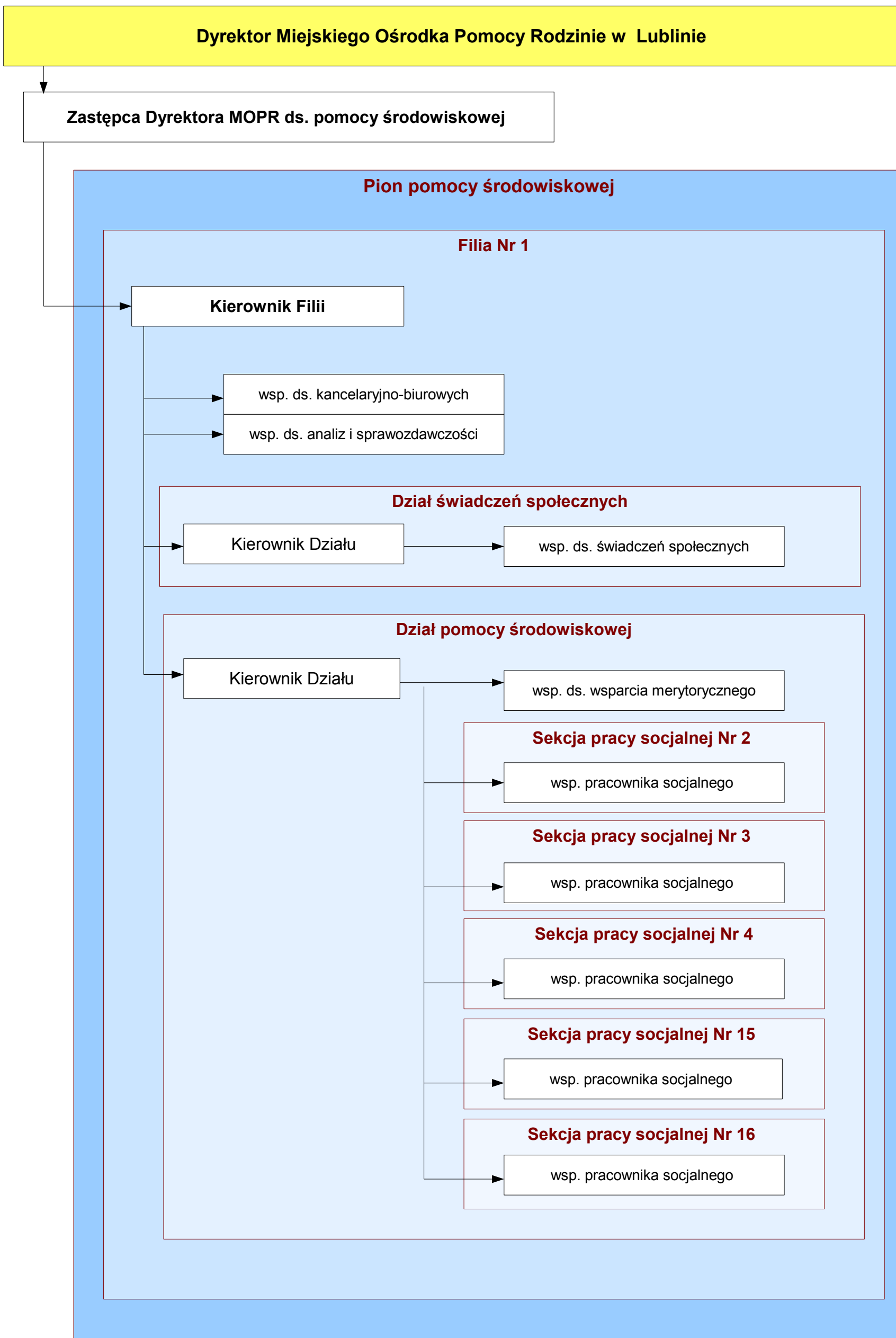
### Schemat graficzny struktury organizacyjnej Miejskiego Ośrodka Pomocy Rodzinie w Lublinie

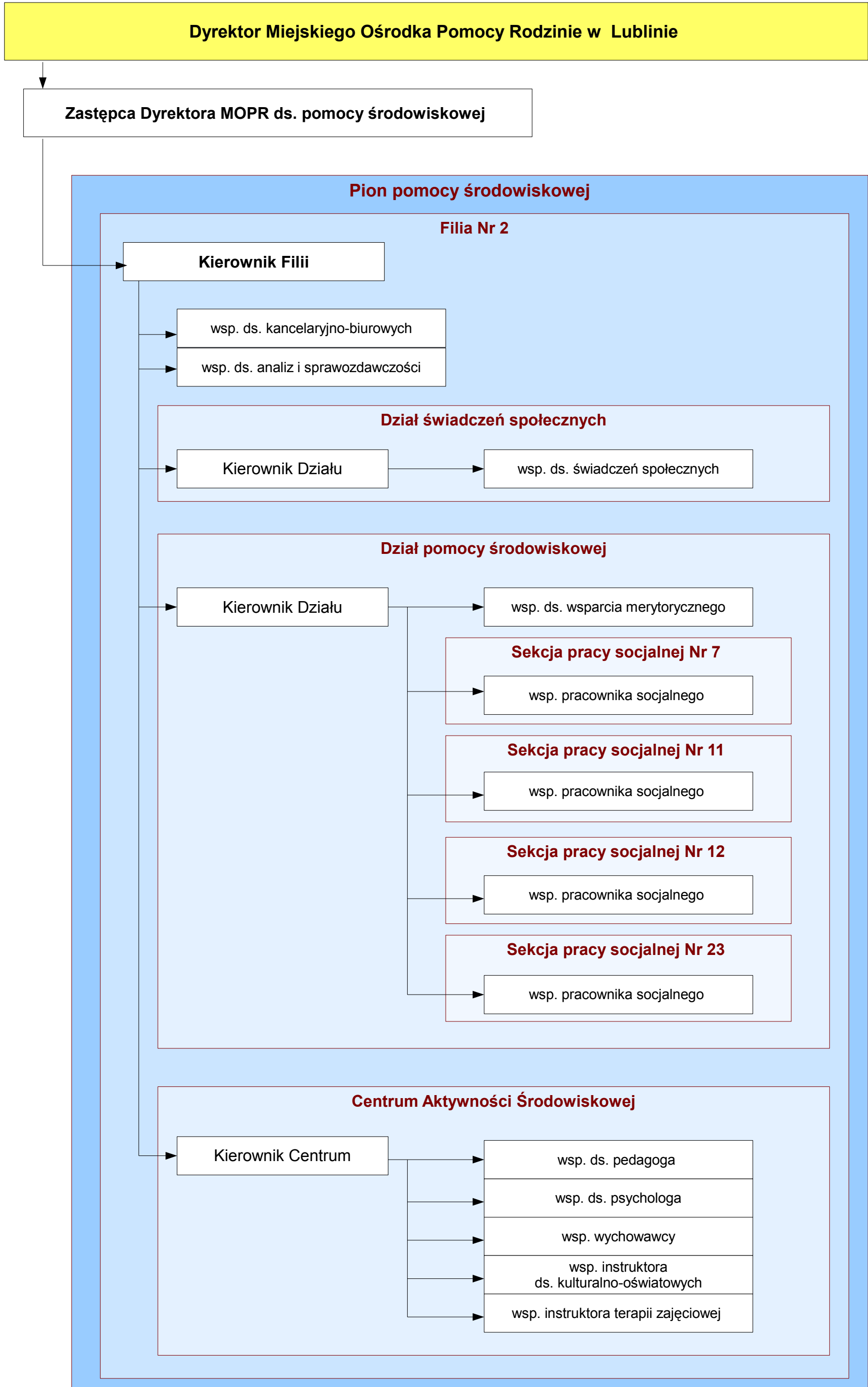


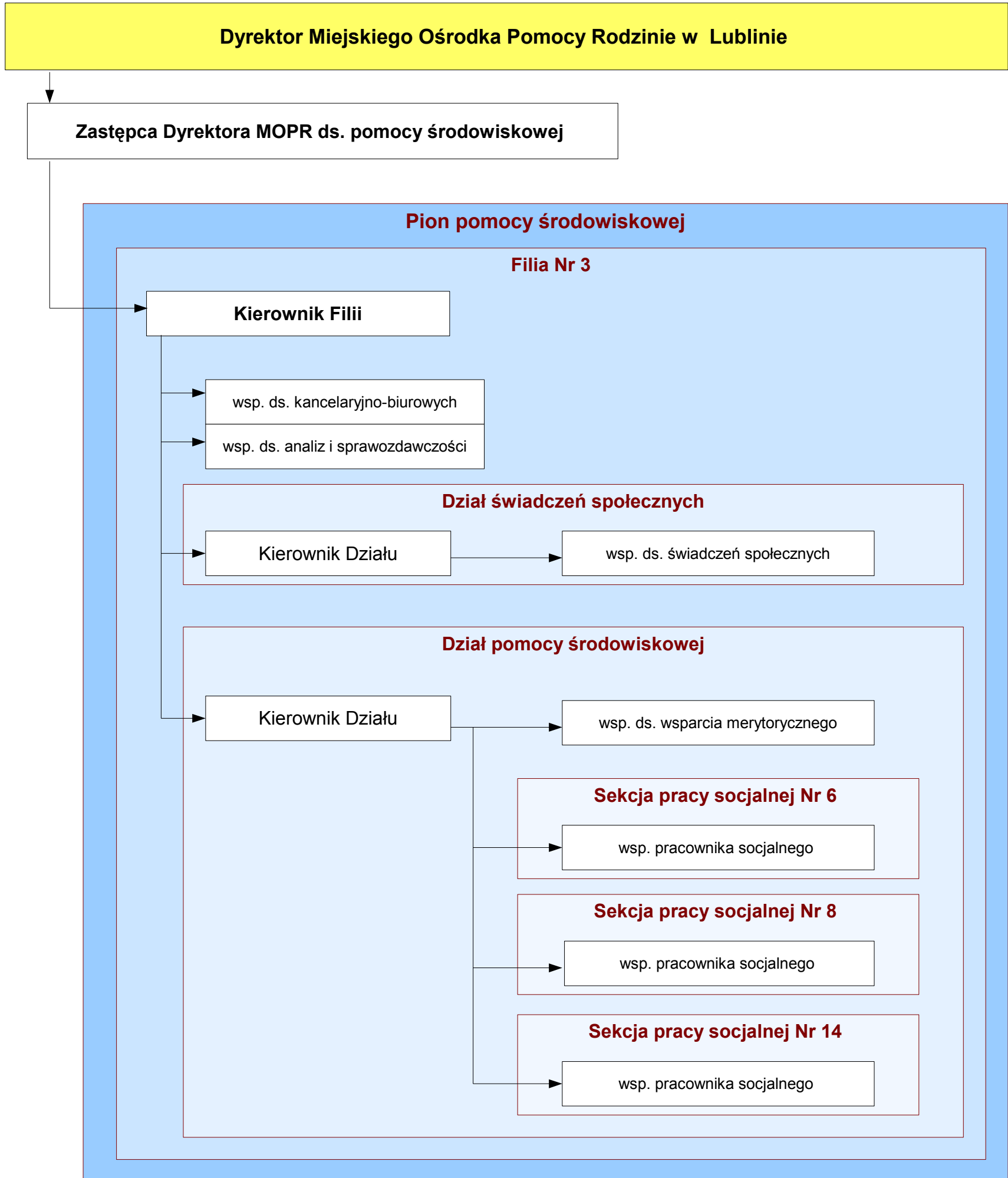
**Dyrektor Miejskiego Ośrodka Pomocy Rodzinie w Lublinie**

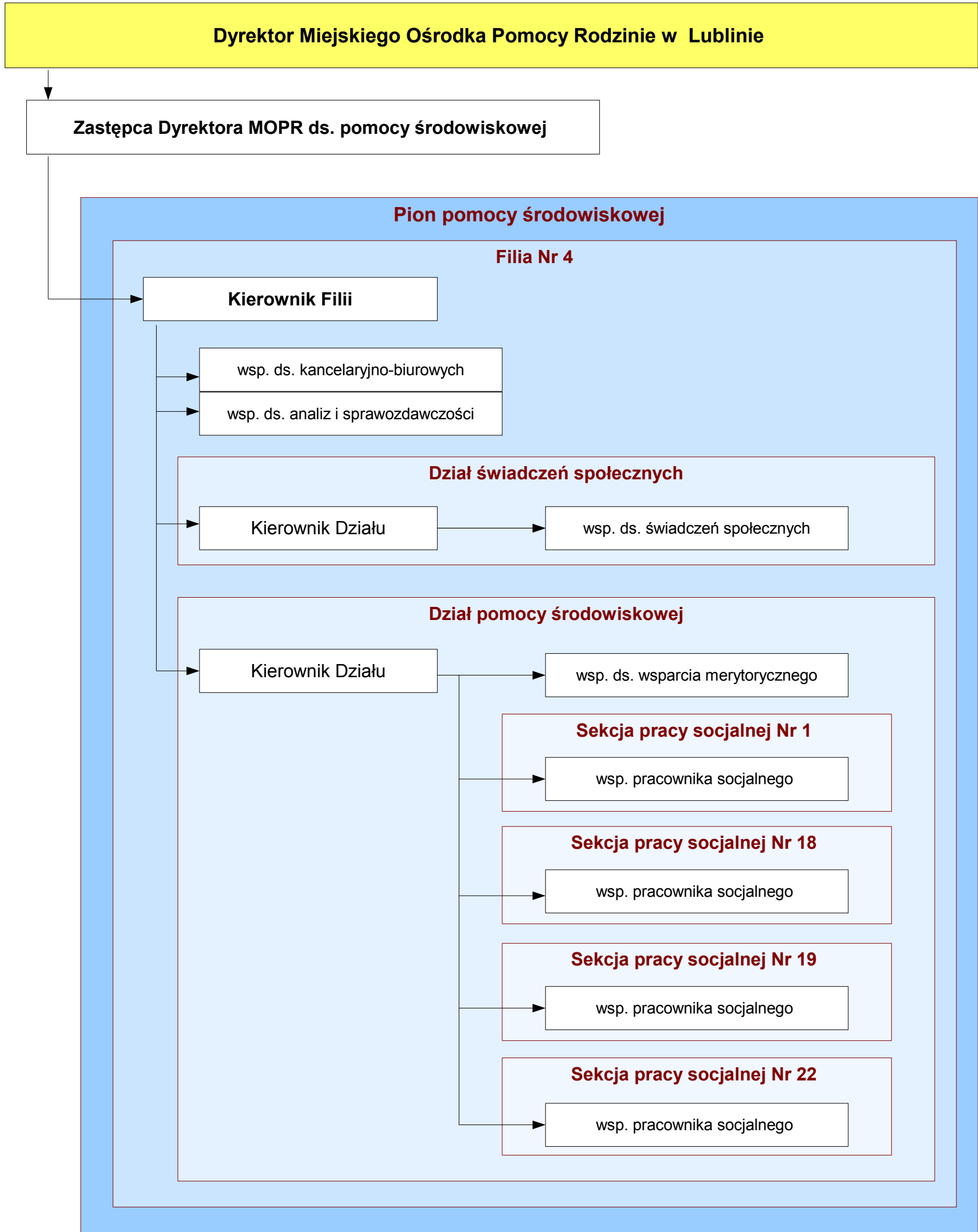


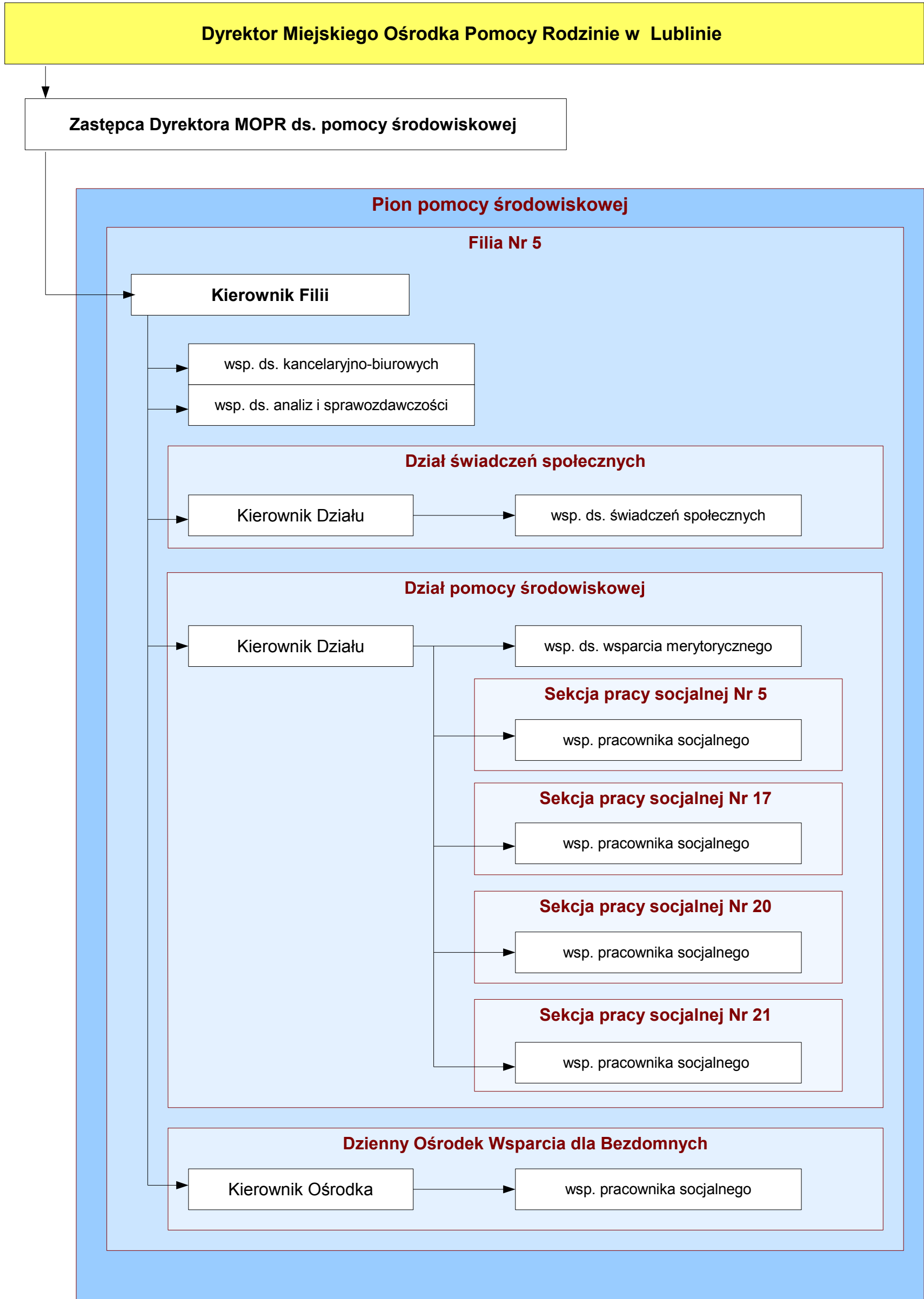




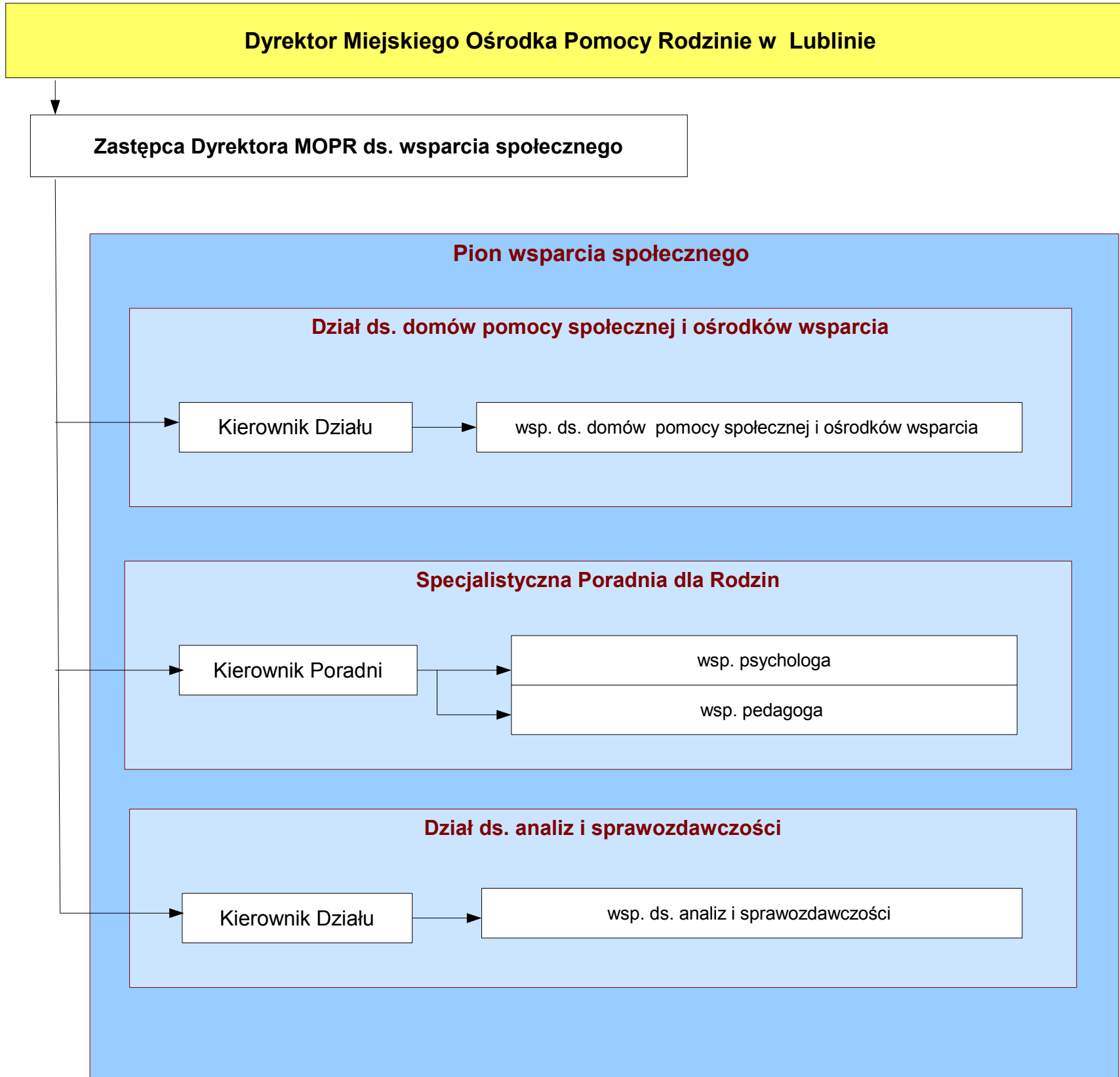


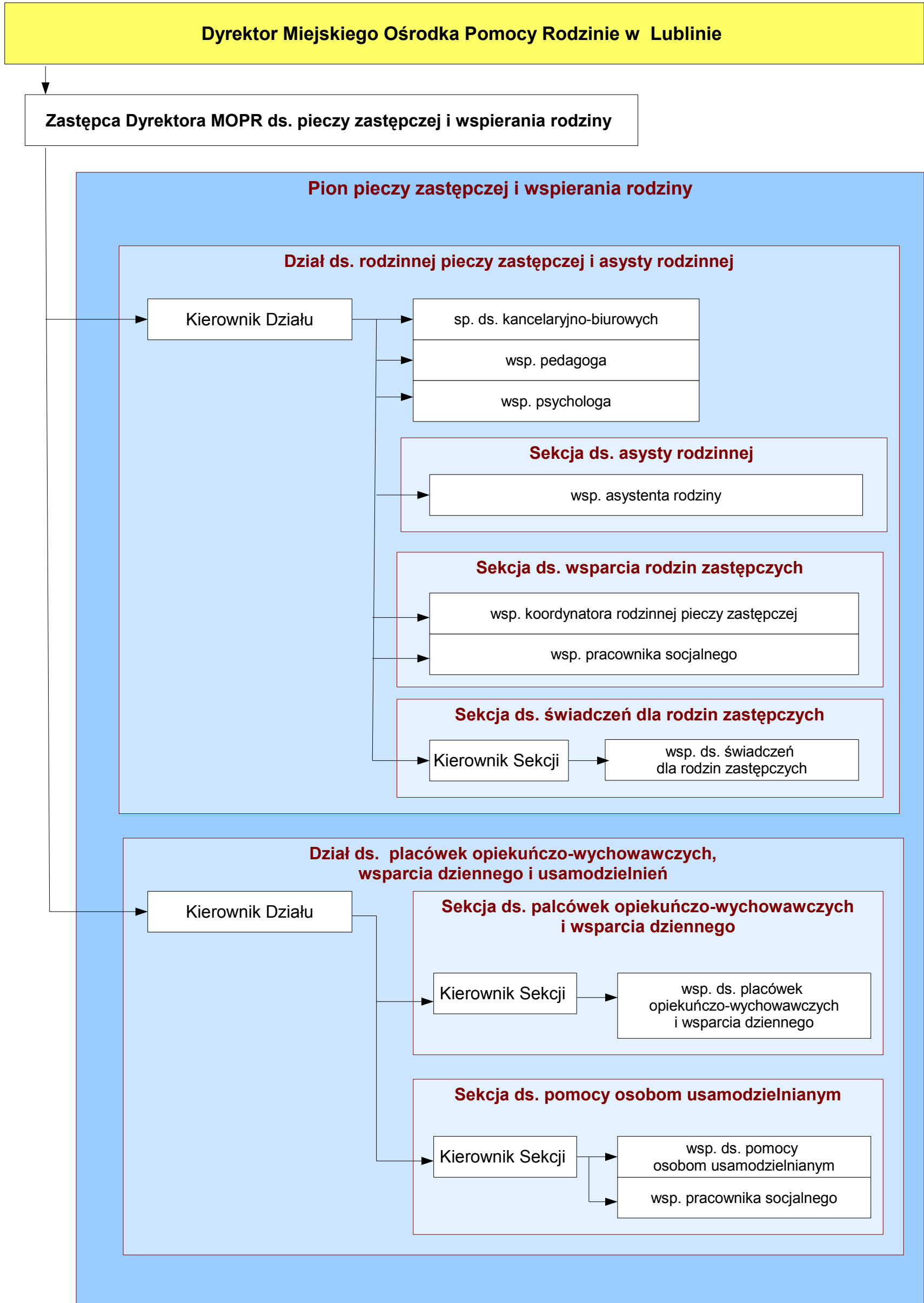


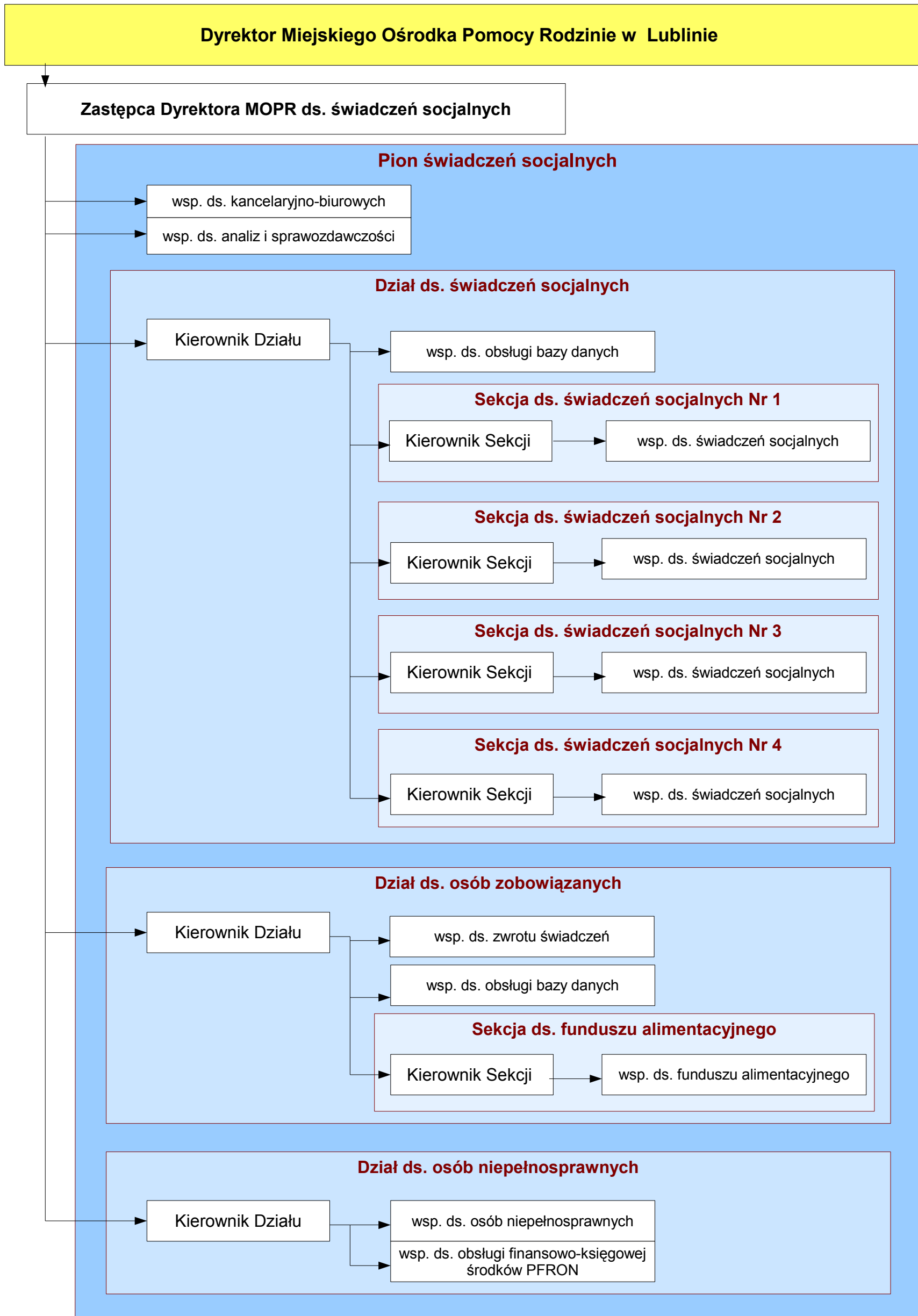










**Wyjaśnienie:**

1. Wektor kierunkowy oznacza podległość służbową.
2. Skróty użyte w opisie stanowisk pracy oznaczają:
  - 1) sp. – jednoosobowe stanowisko pracy;
  - 2) wsp. – wieloosobowe stanowisko pracy.